



## HOW DO YOU APPLY?

Apply online at

[scarboroughTEC.ac.uk/fulltime-apply](http://scarboroughTEC.ac.uk/fulltime-apply) today!

Don't forget to include your current email address and mobile phone number on the application form so we can contact you.



# ELECTRICAL INSTALLATION

## WHAT NEXT?

We can help you when deciding which course or option you wish to take. During your course we ensure you develop employability skills and gain relevant experience. We provide information, advice and support when completing your course and progressing to work or going into higher education. When applying for university we can provide support with the UCAS application and Student Finance.

### ENGLISH & MATHS

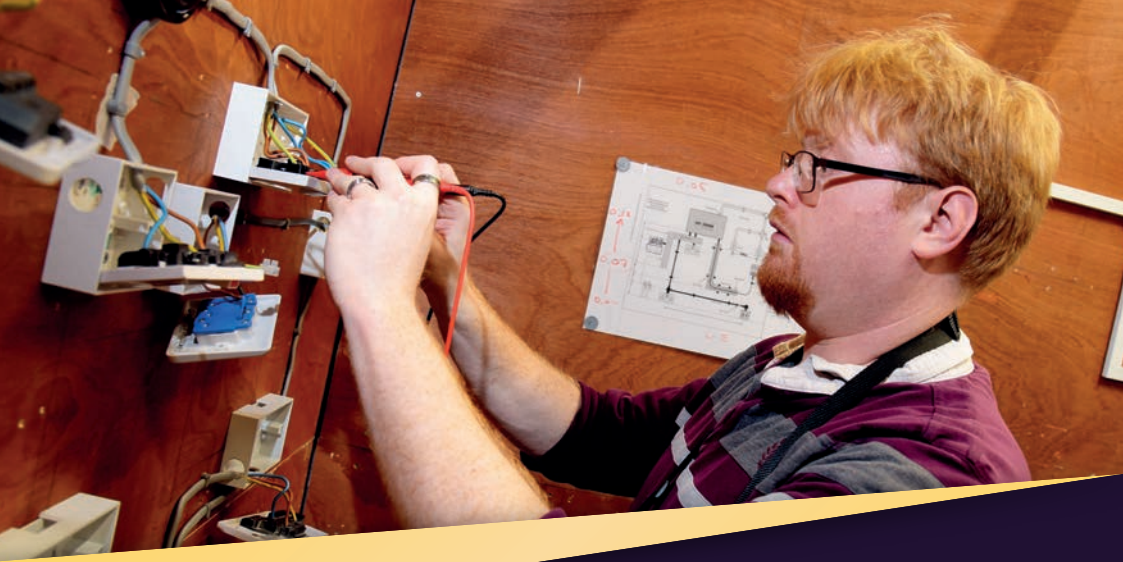
If you haven't achieved a GCSE Grade 4 in English and/or Maths you will be required to either; take a Functional Skills qualification if you have achieved a Grade 1 or 2, or retake the GCSE if you've achieved Grade 3. You will be fully supported by our specialist team ahead of taking the exam.



01723 372105

FIND OUT MORE AT [scarboroughtec.ac.uk](http://scarboroughtec.ac.uk)





# ELECTRICAL INSTALLATION

On the Electrical Installation course you will learn how to install and test a range of electrical installations including lighting, power and control circuits.

On this practical programme you will develop skills in the installation of cables and cable management systems. In the new Automotive, Construction and Engineering Centre we have a well-equipped electrical workshop and high-quality learning environments where you will develop your skills and technical knowledge.

There are many types of electrical work including domestic, commercial and industrial installations. Employment could involve installing electrical systems in new buildings, on construction sites or in existing premises. You will also learn the underpinning knowledge of electro-technology which will allow you to understand the operation of a range of electrical equipment.

## HOW IS THIS COURSE ASSESSED?

These courses are assessed through a series of practical and online multiple-choice tests.

## ENTRY REQUIREMENTS

**Level 1 entry** - You will need GCSEs grades 1/2 or equivalent, including Foundation Awards and Entry Level Certificates.

**Level 2 entry** - To be eligible for this course you need to have a minimum of 3 GCSEs grade 2/3 or above, including English, with an additional GCSE grade 4 in Mathematics.

**Level 3 entry** - Successful completion of a Level 2 within the same subject area and having achieved a GCSE Grade 4 in English and Maths, or Functional Skills English and Mathematics at Level 2.

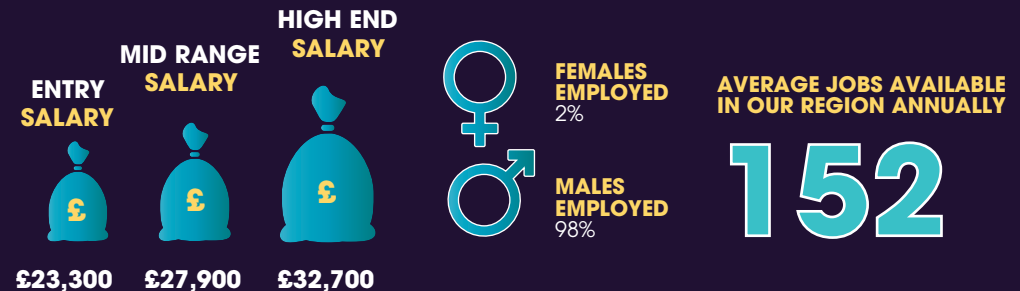
## WHAT WILL YOU STUDY?

On the Electrical Installation course you will learn how to install and test a range of electrical installations including lighting, power and control circuits.

## CAREER AREAS

- Domestic Electrician
- Commercial Electrician
- Data Cabling
- Testing & Inspecting
- Telecommunications

## WHAT ARE THE CAREER PROSPECTS?



\*Source: EMSI 2020