



## HOW DO YOU APPLY?

Apply online at

[scarboroughTEC.ac.uk/fulltime-apply](http://scarboroughTEC.ac.uk/fulltime-apply) today!

Don't forget to include your current email address and mobile phone number on the application form so we can contact you.



# HEALTH & SOCIAL CARE

## WHAT NEXT?

We can help you when deciding which course or option you wish to take. During your course we ensure you develop employability skills and gain relevant experience. We provide information, advice and support when completing your course and progressing to work or going into higher education.

When applying for university we can provide support with the UCAS application and Student Finance. On completion of this course, students will be able to progress into Higher Education or into full-time employment.

### ENGLISH & MATHS

If you haven't achieved a GCSE Grade 4 in English and/or Maths you will be required to either; take a Functional Skills qualification if you have achieved a Grade 1 or 2, or retake the GCSE if you've achieved Grade 3. You will be fully supported by our specialist team ahead of taking the exam.

### CAREER AREAS

- Care Worker
- Home Carer
- Nurse
- Psychologist
- Midwife
- Welfare & Housing Officer



**01723 372105**

FIND OUT MORE AT [scarboroughtec.ac.uk](http://scarboroughtec.ac.uk)



# HEALTH & SOCIAL CARE

**Health and Social Care course covers all aspects of care for adults and children in all settings.**

You will learn about development through the life stages, public health, physiological disorders, anatomy and physiology, equality, diversity and rights in care work, values and planning and supporting and protecting adults; providing you with the foundation for one of many amazing career paths in this vast and varied sector.

Providing care, support and help to those who need it most is a really rewarding career choice. Our expert Health and Social Care team come with a wealth of industry-based experience.

At Level 1 you will study for a joint Health & Social Care and Childcare qualification before specialising from Level 2.

---

## HOW IS THIS COURSE ASSESSED?

These courses are assessed through a series of assignments and subject evidence provided through the building of a portfolio. The course is also assessed through a series of observations and examinations and, at Level 3, a mandatory work placement will take place.

---

## ENTRY REQUIREMENTS

**Level 1 entry** - No formal entry qualifications, applicants will be required to complete a short English and Mathematics assessment and must hold a clear DBS.

**Level 2 entry** - 4 GCSEs at grade 3 are required for this qualification and a 100% commitment to attend college, try hard and learn and achieve are vital to success. You must hold a clear DBS.

**Level 3 entry** - Students may already have completed the Level 2 Diploma in Health and Social Care or may have attainment of a minimum of 5 GCSEs, grade 9-4 which must include Maths and English. You may also be considered for this if programme if you are working in industry and have relevant experience. A 100% commitment to attend college, try hard, learn and achieve are vital to success. You must hold a clear DBS.

## WHAT WILL YOU STUDY?

### At Level 1 you could study:

- The principles of care
- Protection and safeguarding in care
- Communication in care
- Equality and inclusion in care
- Health and Safety in Care
- Introduction to dementia
- Job opportunities in health and social care
- Healthy eating for families.

### At Level 2 you could study:

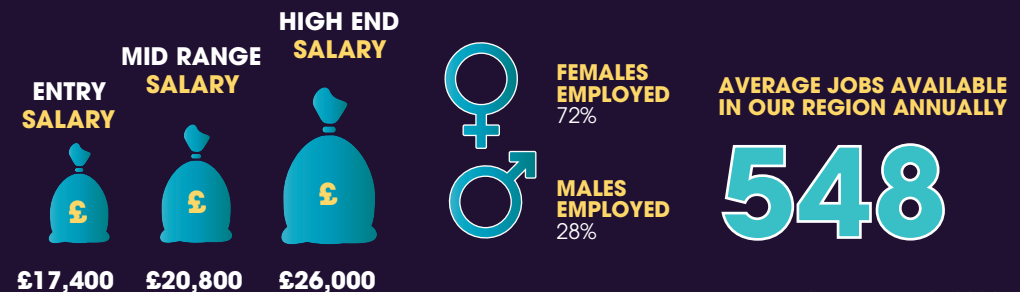
- Human life span development
- Health and Social Care values
- Effective communication
- Equality and diversity
- Individual rights and responsibilities
- Healthy living
- Creative and therapeutic activities
- Carry out a research project
- Vocational experience
- Introduction to First Aid
- Infection control
- Food safety.

### At Level 3 you could study:

Theories of care  
Codes of practice  
Nutritional health  
Psychological perspectives  
Sociological perspectives  
Public health  
Safe working practices  
Practical work experience in industry.

---

## WHAT ARE THE CAREER PROSPECTS?



\*Source: EMSI 2020