



HOW DO YOU APPLY?

Apply online at

scarboroughTEC.ac.uk/fulltime-apply today!

Don't forget to include your current email address and mobile phone number on the application form so we can contact you.



BRICKWORK

WHAT NEXT?

We can help you when deciding which course or option you wish to take. During your course we ensure you develop employability skills and gain relevant experience. We provide information, advice and support when completing your course and progressing to work or going into higher education. When applying for university we can provide support with the UCAS application and Student Finance.

ENGLISH & MATHS

If you haven't achieved a GCSE Grade 4 in English and/or Maths you will be required to either; take a Functional Skills qualification if you have achieved a Grade 1 or 2, or retake the GCSE if you've achieved Grade 3. You will be fully supported by our specialist team ahead of taking the exam.

CAREER AREAS

- Bricklayer
- Groundworks
- Restoration
- Building Maintenance
- Demolition
- Concreting
- Block paver



01723 372105

FIND OUT MORE AT scarboroughtec.ac.uk





BRICKWORK

Ready to leave the classroom and get stuck into something more practical? Our Brickwork courses could be for you!

A career in construction allows you to work outdoors in a variety of locations, meaning each day is a different challenge and experience. Working as part of a team, high earning potential and the possibility of becoming your own boss are just some of the benefits you could experience when entering the industry. With the rise in digital industries, many traditional career options are being made obsolete however, learning a trade and working in construction is something that will continue to be vital and very much in demand.

Choosing to study Brickwork at Scarborough TEC will allow you to benefit from the experience and knowledge of the many regional businesses we work with here at Scarborough TEC, as well as the guidance and support of our experienced tutors. You'll learn about safe working practices, building methods and construction technology as well as basic brick and block laying techniques in our industry standard workshops.

ENTRY REQUIREMENTS

Level 1 entry - All students will require a minimum of 4 GCSEs grade 1/2 or equivalent, including Foundation Awards and Entry Level Certificates.

Level 3 entry - You will require an appropriate Level 2 qualification in your chosen subject area plus a GCSE grade 4 (C) or equivalent in English & Maths.

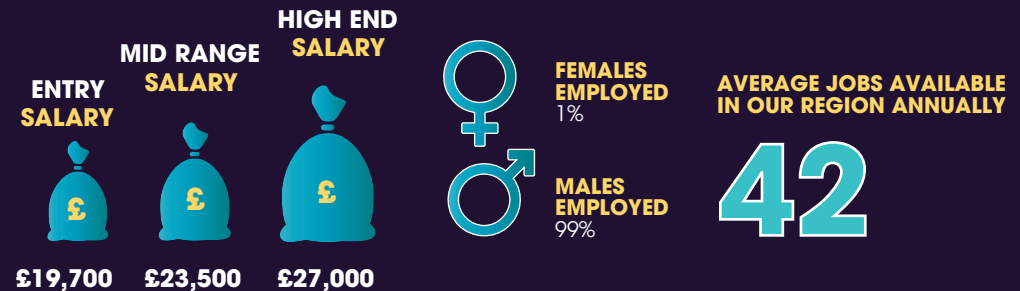
HOW IS THIS COURSE ASSESSED?

These qualifications are assessed through a series of online tests and practical assessments. Students must demonstrate, in a real workplace environment, that they are competent against a set of performance statements. You are assessed by an occupationally competent and qualified assessor whose job is to work with you and help you through your programme of learning.

WHAT WILL YOU STUDY?

You'll learn about safe working practices, building methods and construction technology as well as basic brick and block laying techniques in our industry standard workshops.

WHAT ARE THE CAREER PROSPECTS?



*Source: EMSI 2020